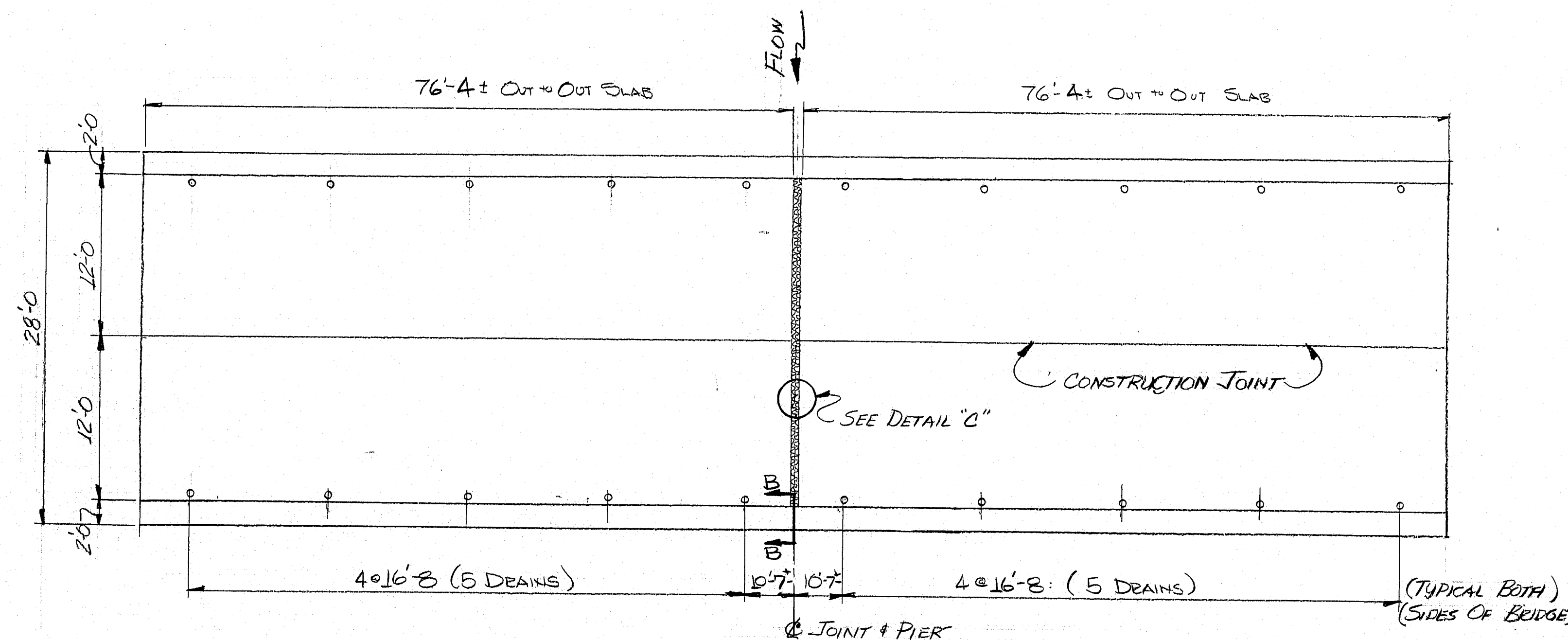
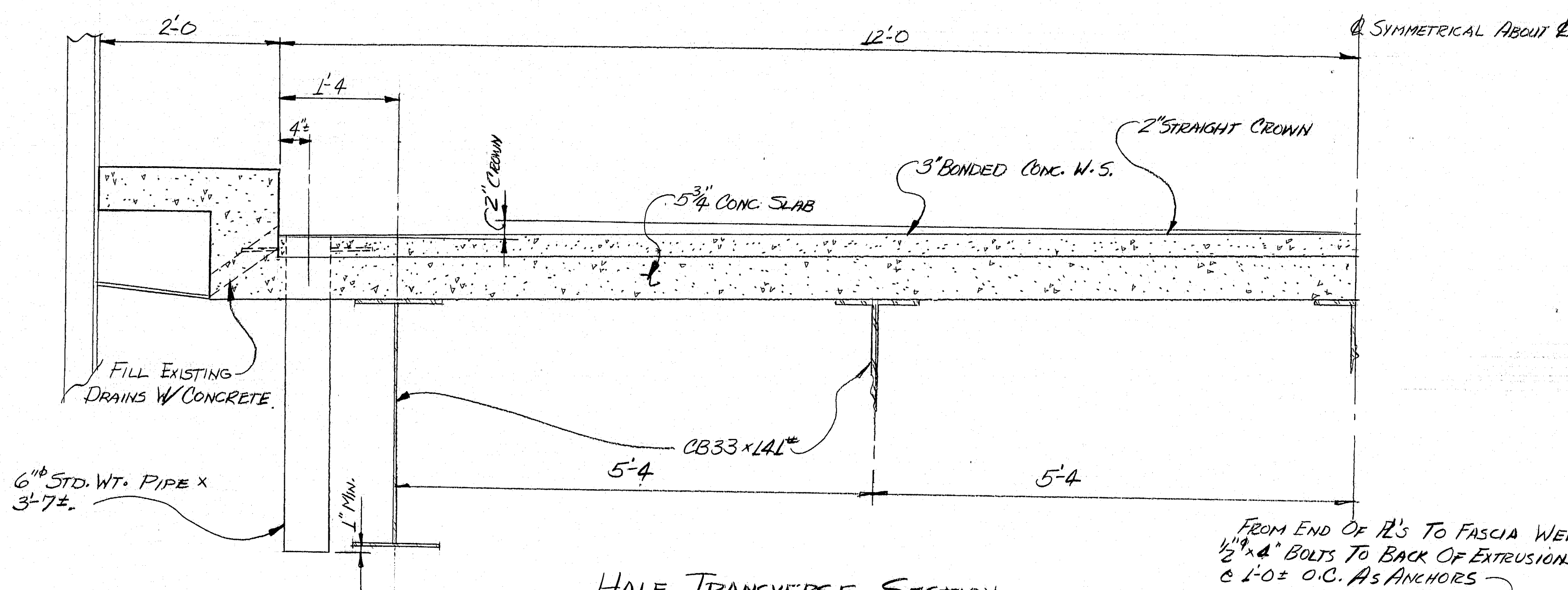


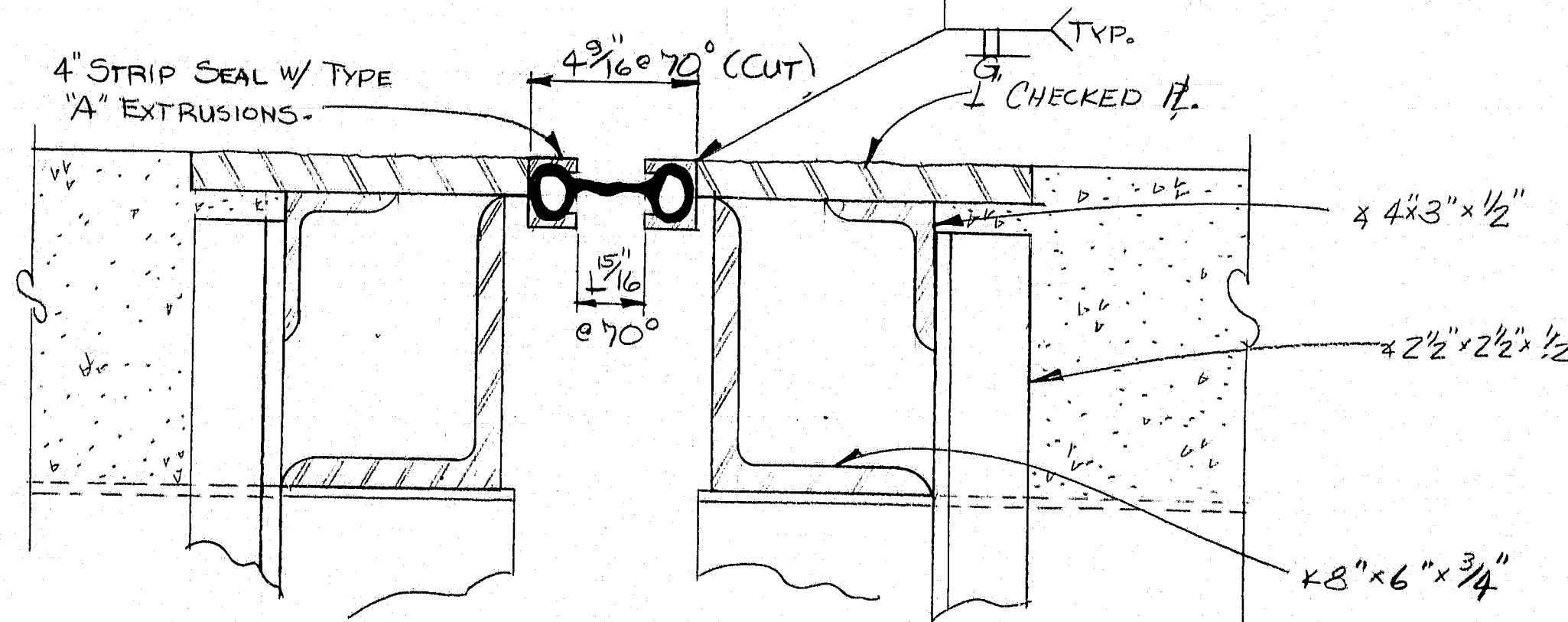
F.R.A. RES. NO.	STATE	PROJECT NUMBER	SHEET NO.	TOTAL SHEETS
1	MAINE			



PLAN



HALF TRANSVERSE SECTION



SECTION A-A

TEMP.	10°	20°	30°	40°	50°	60°	70°	80°	90°
OPENING	2 1/2"	2 1/2"	2 1/2"	2 1/2"	2 1/2"	2 1/2"	2 1/2"	2 1/2"	2 1/2"

#### BONDING GROUT

The deck surface must be thoroughly sandblasted and cleaned to remove all dust or loose materials immediately before bonding grout is placed.

Deck surface to be surface dry with no standing water in pockets or low areas when bonding grout is applied.

The bonding grout shall consist of equal parts by weight of Portland Cement and concrete sand with the plus #8 material removed and mixed with enough water to give a thick creamy consistency.

Bonding grout to be evenly broomed onto the concrete surface ensuring that the entire surface is coated and that no excess grout collects in low spots or pockets. Grout shall be thoroughly broomed under and around reinforcing.

Rate of application must be controlled so that the grout does not dry before the new concrete is placed.

#### GENERAL NOTES

1. Remove existing wearing surface.
2. If main slab steel is exposed, concrete should be removed under the steel to a depth of 1" minimum.
3. Blast clean the slab before any placement of bonding grout or concrete. NOTE: Slab is to be surface dry before placement of bonding grout.
4. Broom on a layer of bonding grout just prior to placing concrete. See note this sheet for bonding grout specifications.
5. Concrete to be cured using burlap and water or other approved methods.
6. Concrete to be Class "B" and aggregate to be crushed ledge.
7. Minimum cover to be 2" unless otherwise noted.
8. Chamfer all exposed edges 1/4" unless otherwise noted.

#### SCOPE OF WORK

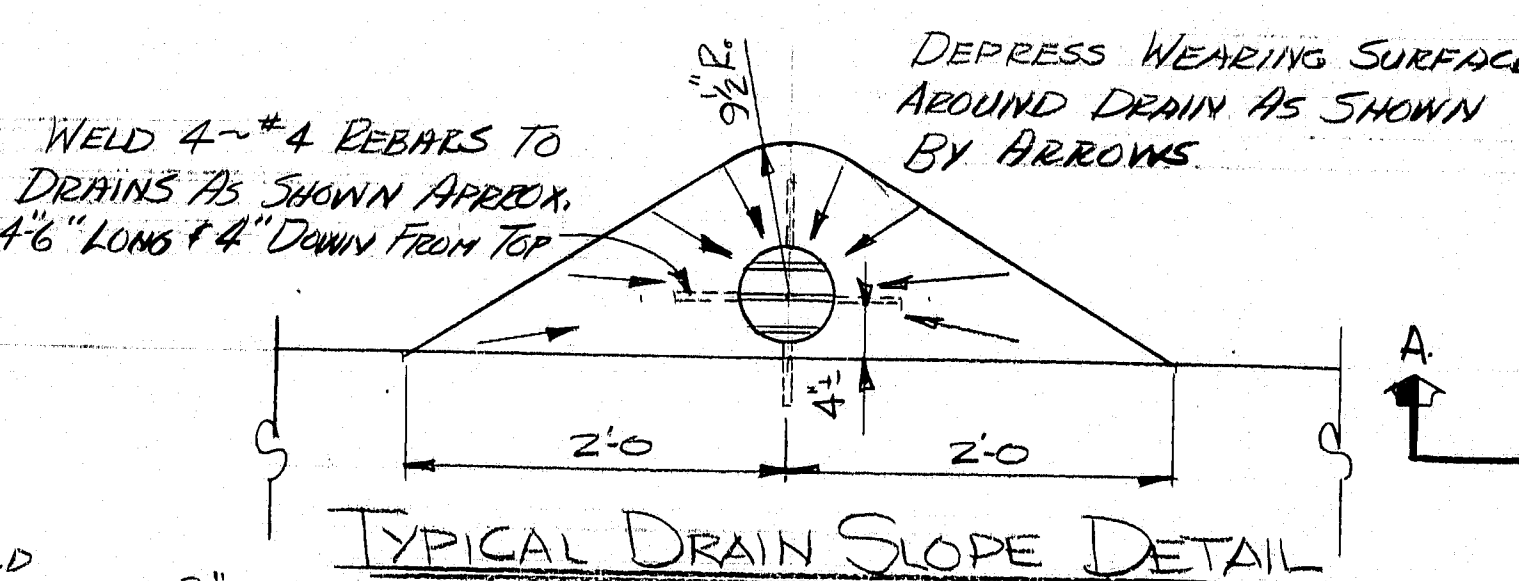
REMOVE EXISTING WEARING SURFACE. INSTALL NEW DRAINS. PLUG EXISTING DRAINS WITH CONCRETE. INSTALL STRIP SEAL, MODIFYING FINGER JOINTS AS NECESSARY. PLACE NEW 3" BONDED CONCRETE WEARING SURFACE.

#### BILL OF MATERIALS

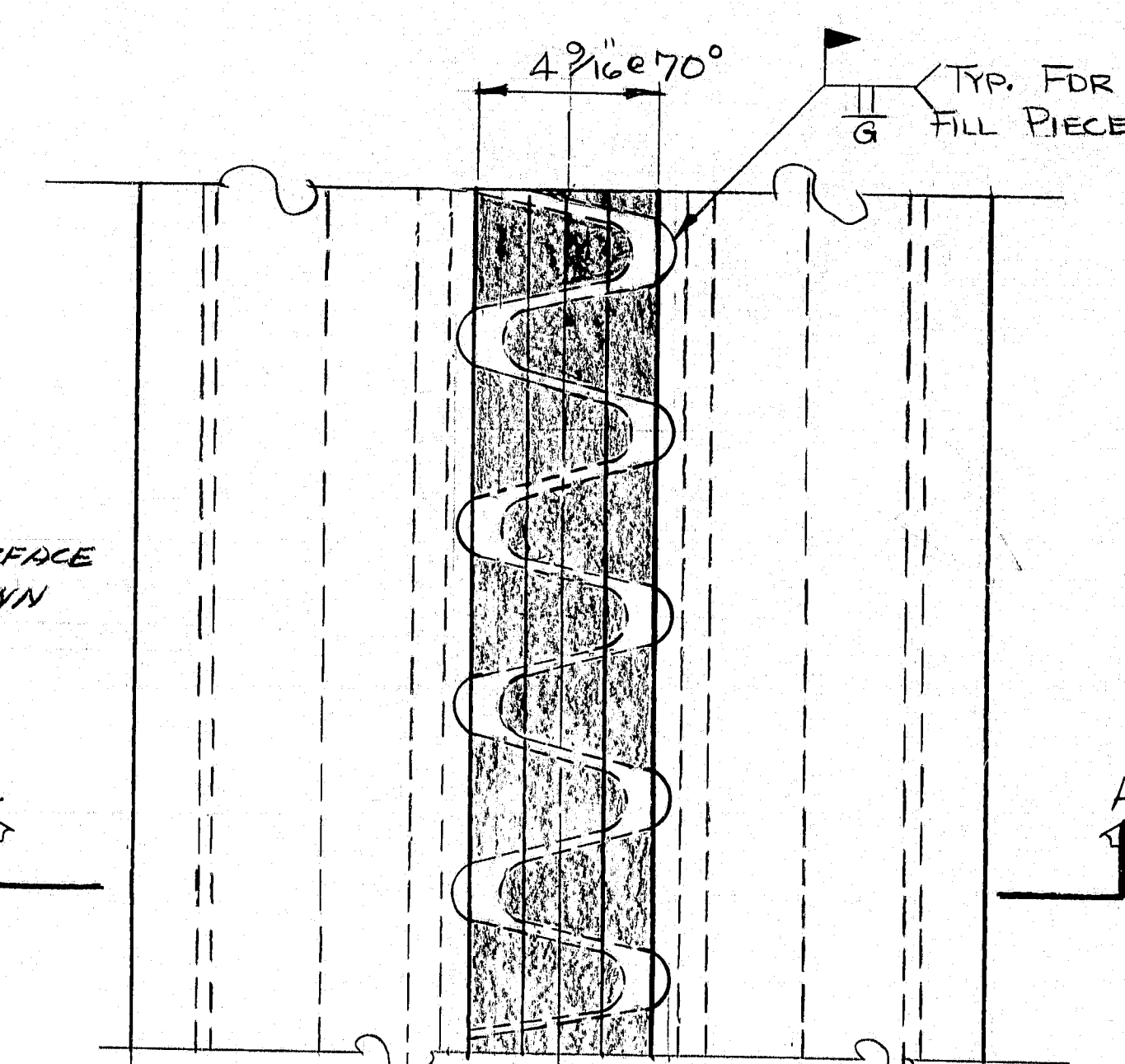
20 REQ'D ~ 6" STD. WT. PIPE X 3'-7 1/2"  
20 REQ'D ~ 1/2" x 4" MACH. BOLTS  
60 LIN. FT. ~ TYPE "A" STEEL EXTRUSIONS TO FIT 4" STRIP SEAL.  
1 REQ'D ~ 4" STRIP SEAL X 30'-0"  
1 REQ'D ~ 12 1/2" x 10" x 4'-0" ±  
CONCRETE  
153 x 24 x .33 = 44.8 SAY 45 CY.  
27

#### NOTE:

CUT TIPS OF FINGERS AS SHOWN IN SHADED PORTIONS AND USE PIECES TO FILL GAP AFTER EXTRUSIONS ARE IN PLACE. WELD AS SHOWN ON EXP. DETAIL. SIDES MUST BE CUT PARALLEL.

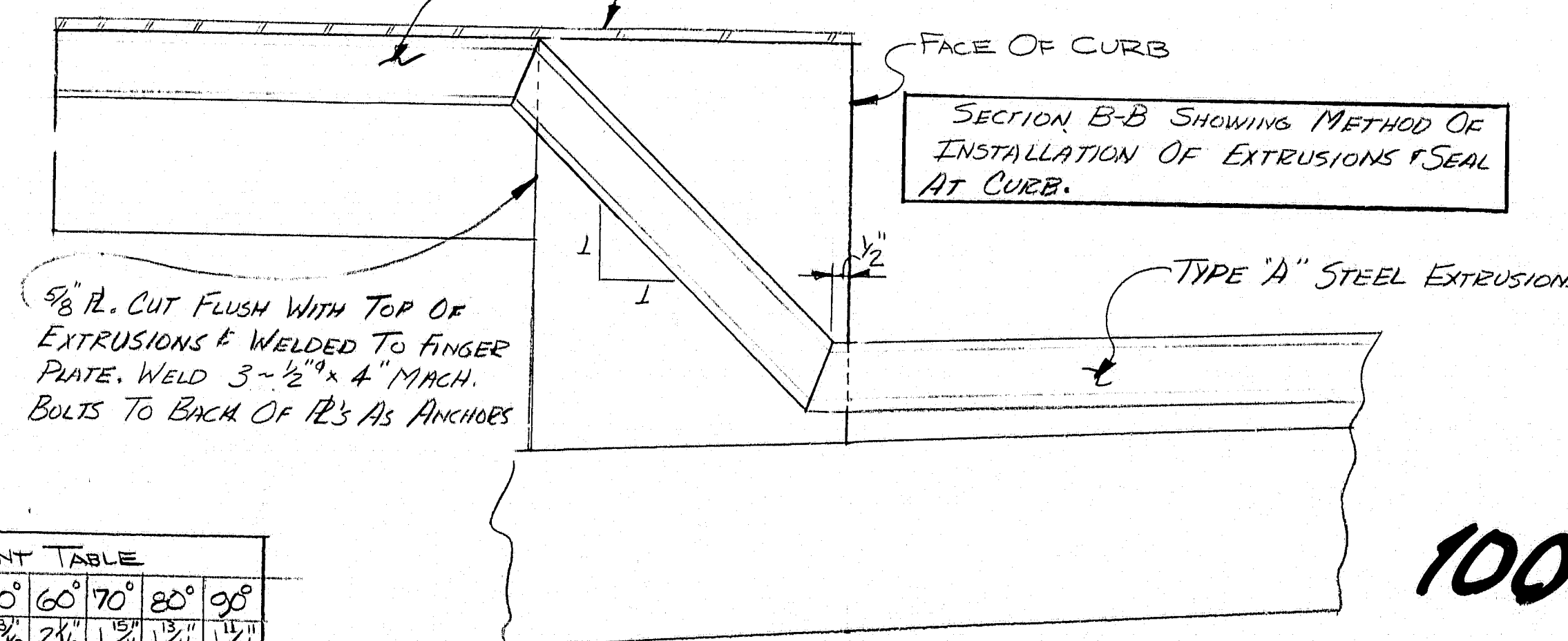


TYPICAL DRAIN SLOPE DETAIL



DETAIL "C"

FROM END OF R'S TO FASCIA WELD 1/2" x 1/2" BOLTS TO BACK OF EXTRUSIONS @ 1'-0" O.C. AS ANCHORS



SECTION B-B (CURBS ONLY)

STATE OF MAINE DEPARTMENT OF TRANSPORTATION
#3766
ST. CROIX BRIDGE OVER ST. CROIX RIVER IN THE TOWN OF MASARDIS IN ARROOSTOOK COUNTY
CONG. W. S., STRIP SEALS, DRAINS
SHEET 1 OF 1 AUGUSTA, MAINE MAR. 14, 1983

100-420

PROJECT DESIGN ENGINEER	DATE
BY (LEED)	5/14/83
DESIGN - DETAIL	CHECKED
PLANS	REVISIONS
	FIELD CHANGES

BRUNING 44192 25710